

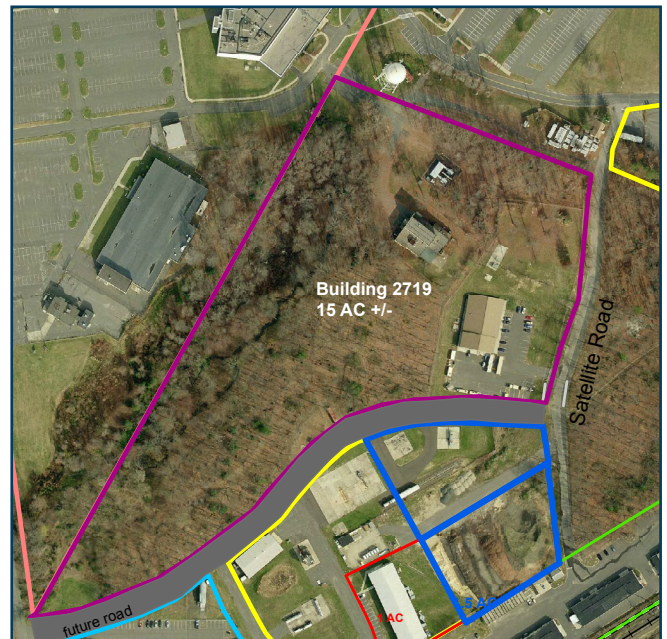
▶ BUILDING 2719



PROPERTY FEATURES

- Located in the Tinton Falls Reuse Area ▶
- 15 acre parcel ▶
- 6,574 sf Office ▶
- 2,448 sf High Bay Garage ▶
- Built in 2006 ▶
- Reuse for Office / Other Commercial ▶

*RFOTP & Land Use Regulations are posted on:
www.fortmonmouthnj.com*



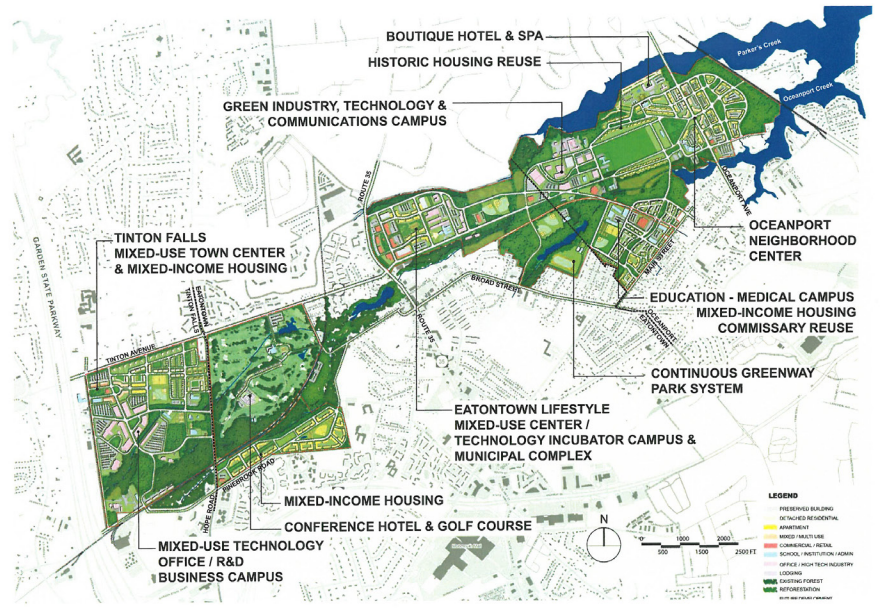
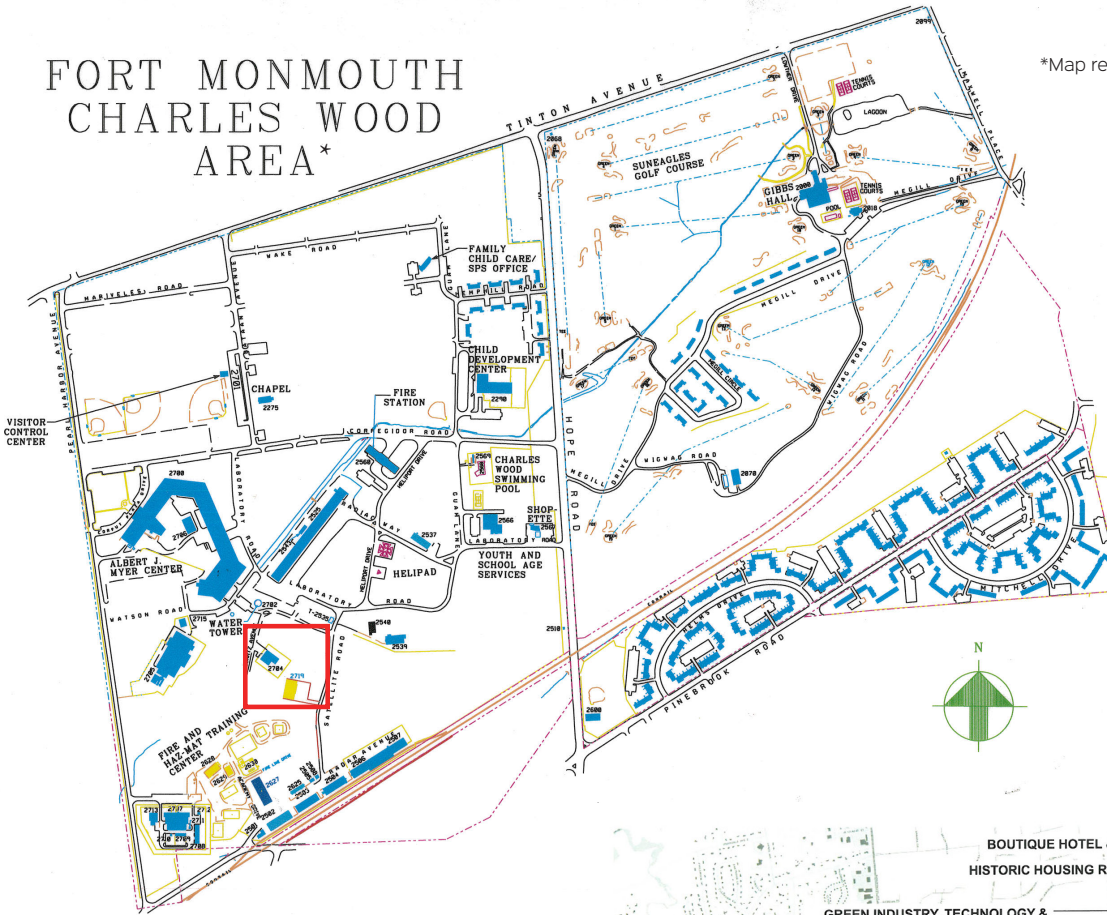
FOR MORE INFORMATION PLEASE CONTACT:

FORT MONMOUTH ECONOMIC REVITALIZATION AUTHORITY (FMERA)

732-720-6350 | FMERAINfo@njeda.com | www.fortmonmouthnj.com

FORT MONMOUTH CHARLES WOOD AREA*

*Map represents Fort prior to redevelopment.



FORT MONMOUTH CONCEPT PLAN CONCEPT PLAN IN 2028 (20 - YEAR PLAN)

FMERA
2022.10.11.18

FOR MORE INFORMATION PLEASE CONTACT:

FORT MONMOUTH ECONOMIC REVITALIZATION AUTHORITY (FMERA)

732-720-6350 | FMERAINfo@njeda.com | www.fortmonmouthnj.com