

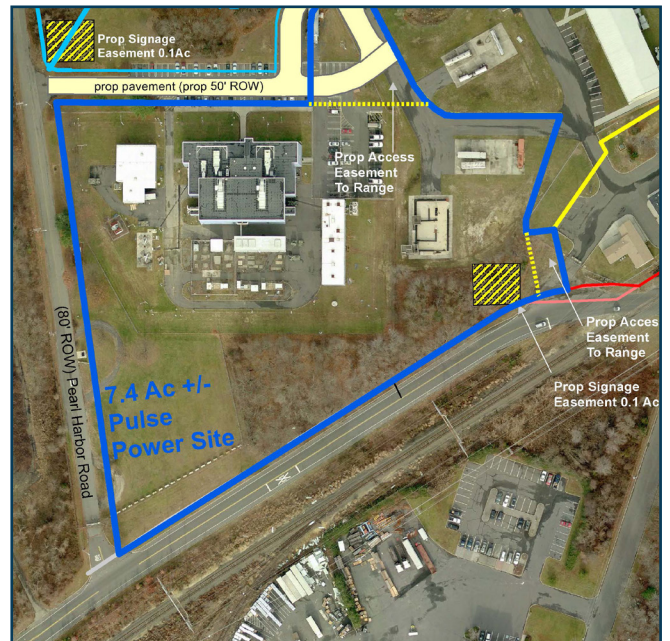
PULSE POWER BUILDING 2707



PROPERTY FEATURES

- Located in the Tinton Falls Reuse Area ▶
- 7.4 acre parcel ▶
- 15,690 sf Office ▶
- 10,786 sf Dry Lab & Testing Space ▶
- Features (2) 50' ft High Bays ▶
- Built in 1988 ▶
- Demolition OR Reuse for Office / R & D / Other Commercial ▶

*RFOTP & Land Use Regulations are posted on:
www.fortmonmouthnj.com*



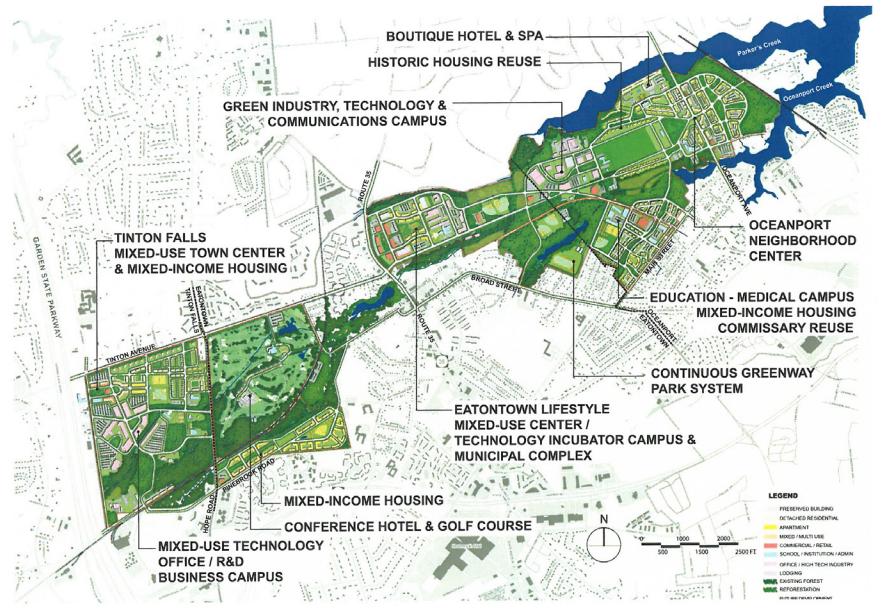
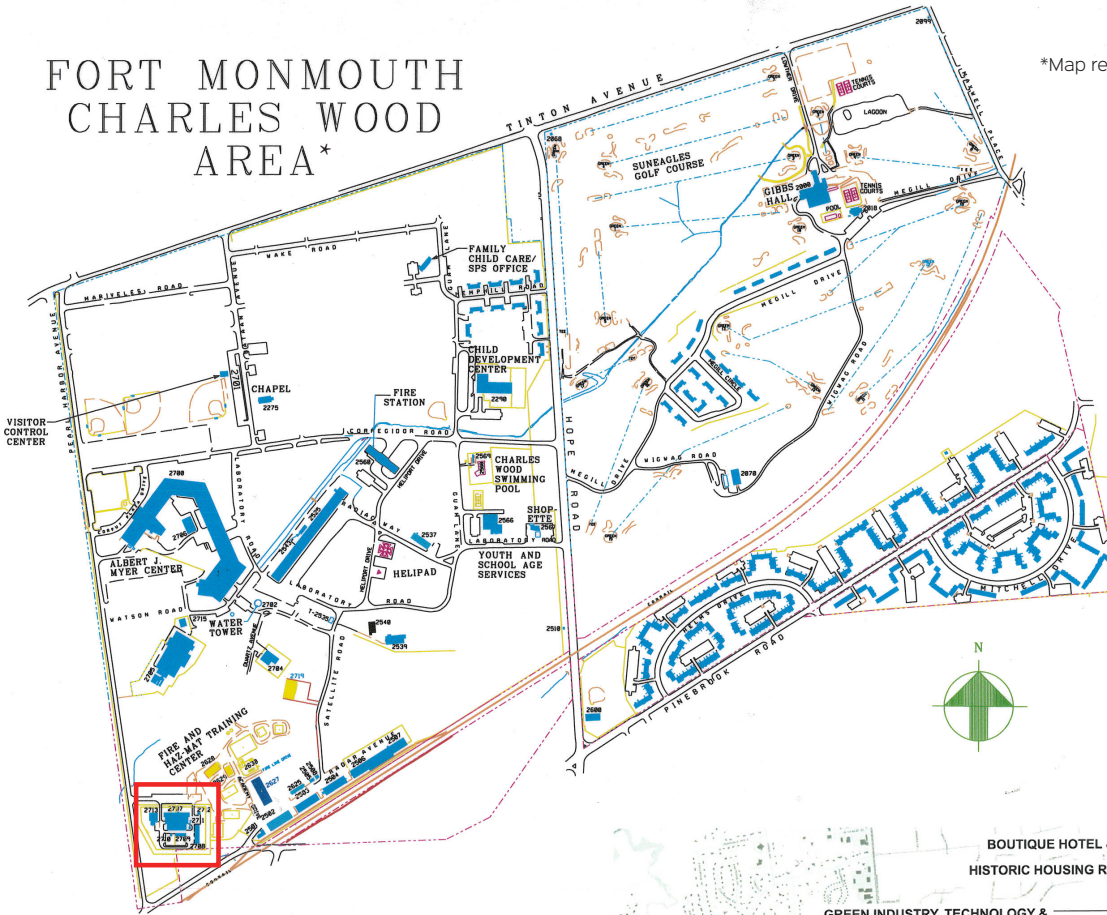
FOR MORE INFORMATION PLEASE CONTACT:

FORT MONMOUTH ECONOMIC REVITALIZATION AUTHORITY (FMERA)

732-720-6350 | FMERAINfo@njeda.com | www.fortmonmouthnj.com

FORT MONMOUTH CHARLES WOOD AREA*

*Map represents Fort prior to redevelopment.



FORT MONMOUTH CONCEPT PLAN CONCEPT PLAN IN 2028 (20 - YEAR PLAN)

FMERA
2022.10.11.18