

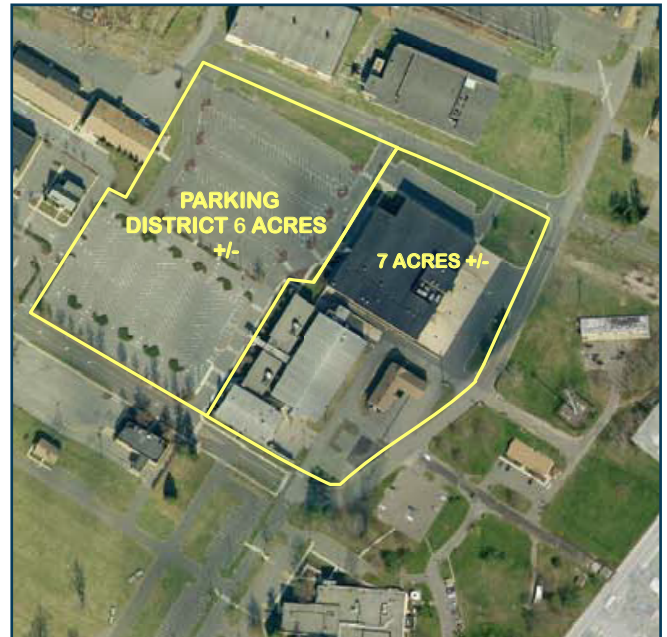
COMMISSARY & PX BUILDING 1007 & POST EXCHANGE COMPLEX / BUILDING 812



PROPERTY FEATURES

- Located in the Oceanport Reuse Area ►
- 7± acre parcel ►
- 53,700± sf (Commissary)
- 45,626± combined sf (PX) ►
- 5,563± sf (Building 812)
- Built in 1998 (Commissary)
- Circa 1970 (PX) ►
- Built 1941 (Building 812)
- Retail or Other Commercial Reuse ►

*RFOTP & Land Use Regulations are posted on:
www.fortmonmouthnj.com*

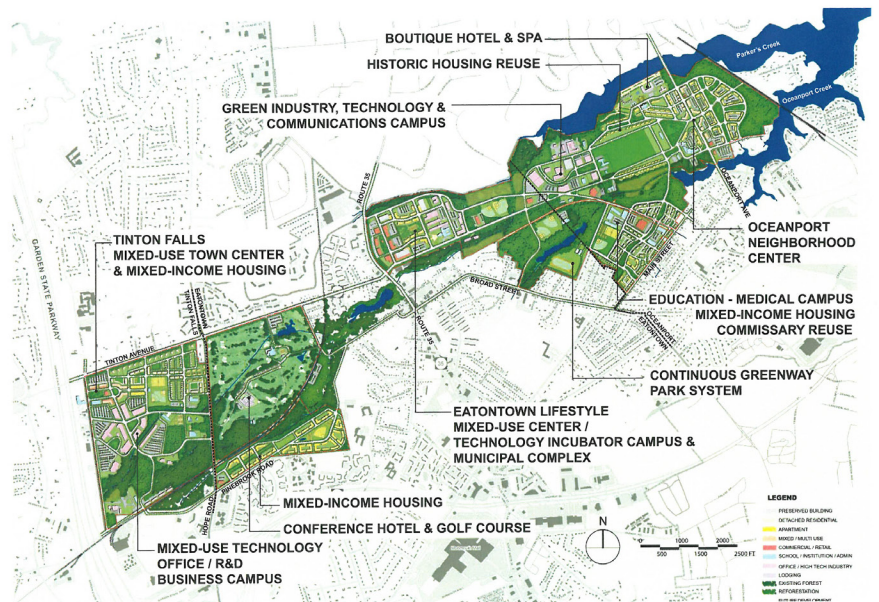
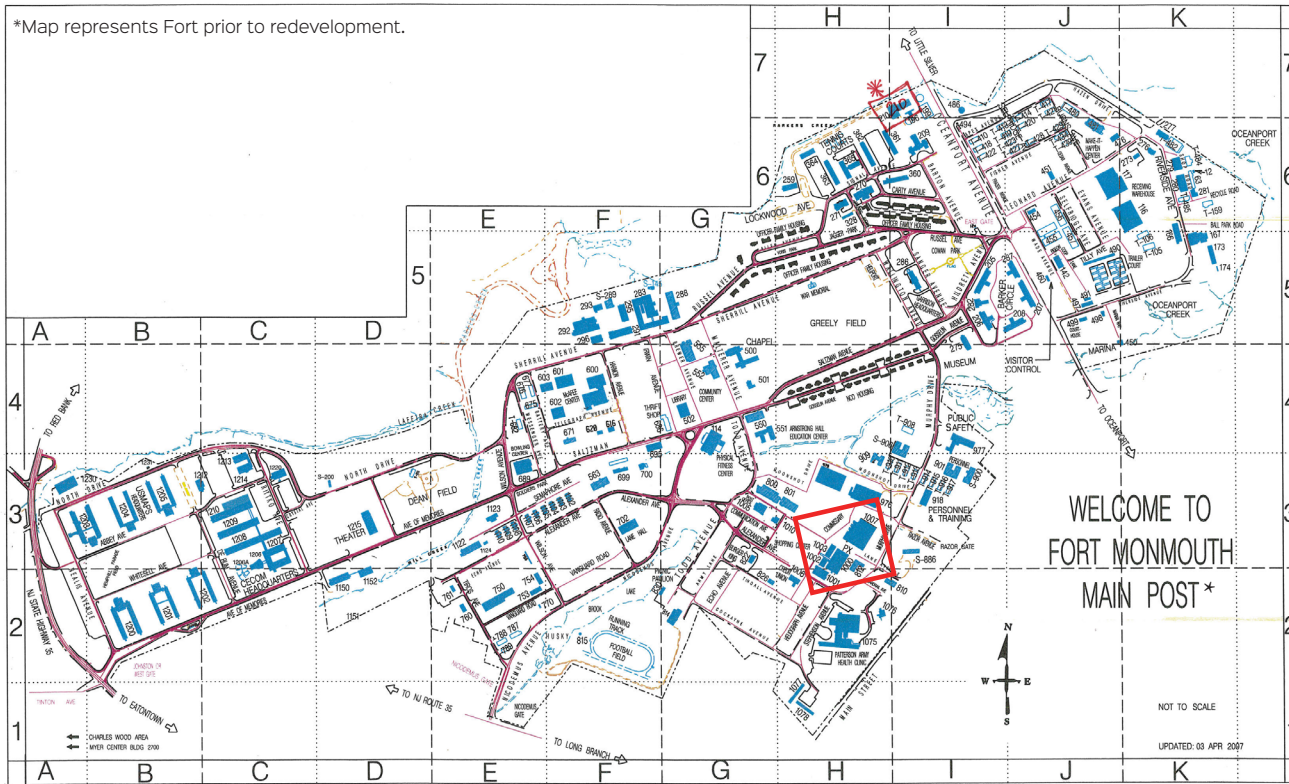


FOR MORE INFORMATION PLEASE CONTACT:

FORT MONMOUTH ECONOMIC REVITALIZATION AUTHORITY (FMERA)

732-720-6350 | FMERAINfo@njeda.com | www.fortmonmouthnj.com

*Map represents Fort prior to redevelopment.



FORT MONMOUTH CONCEPT PLAN CONCEPT PLAN IN 2028 (20 - YEAR PLAN)

FMERA
02082 - 10/1/14

FOR MORE INFORMATION PLEASE CONTACT:

FORT MONMOUTH ECONOMIC REVITALIZATION AUTHORITY (FMERA)

732-720-6350 | FMERAINfo@njeda.com | www.fortmonmouthnj.com